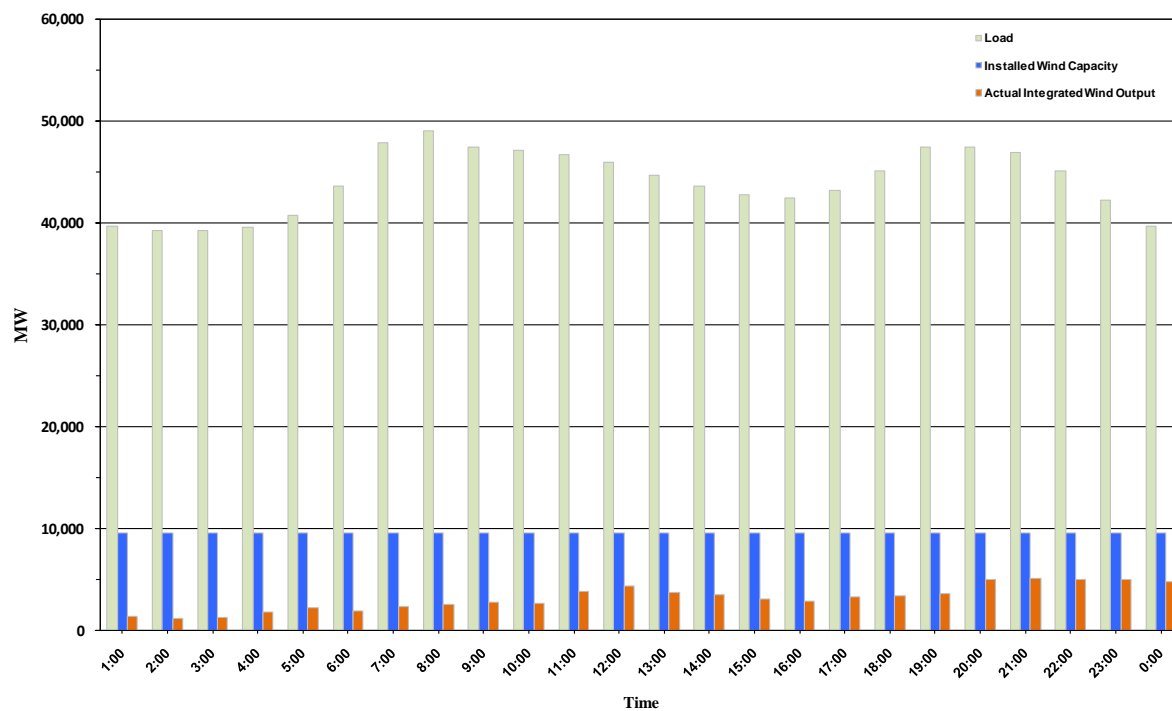




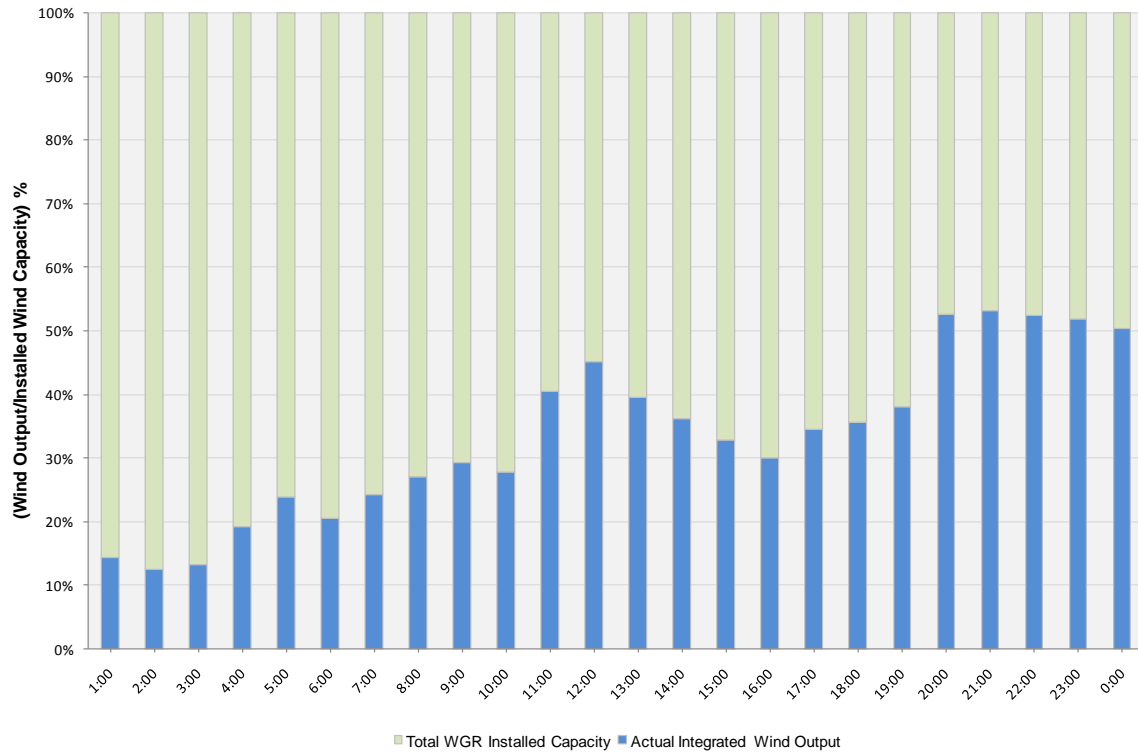
ERCOT Grid Operations Wind Integration Report: 01/13/11

| | |
|----------------------|-----------|
| Peak Load | 49,017 MW |
| Load Peak Hour | 08 |
| Wind Record 12/11/10 | 7,227 MW |
| Max Wind Value | 5,615 MW |
| Wind Peak Hour | 20:22:32 |
| Wind Integration % | 11.92 |

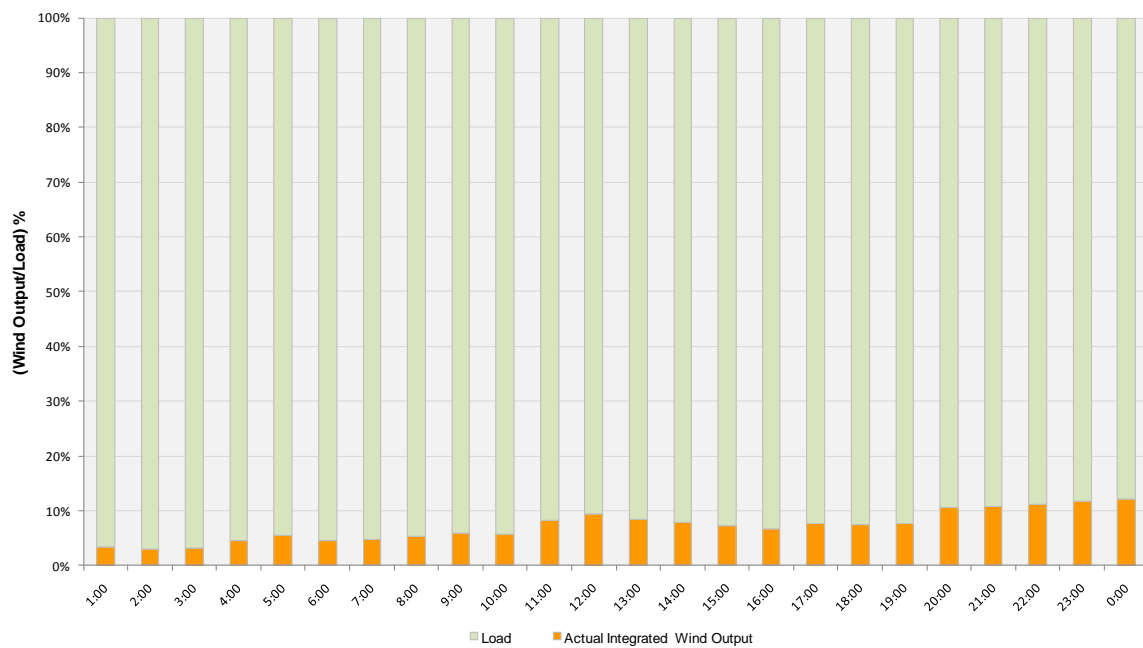
Hourly Average Actual Load vs. Actual Wind Output
01-13-2011



Actual Wind Output as a Percentage of the Total Installed Wind Capacity
01-13-2011



Actual Wind Output as a Percentage of the ERCOT Load
01-13-2011



ERCOT Load vs. Actual Wind Output 01/06/11 - 01/13/11